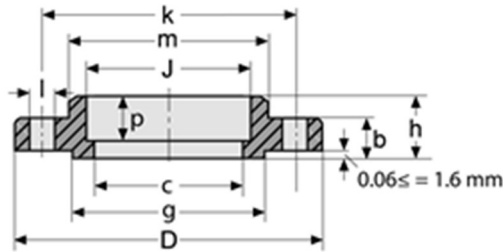


TALA OFFSHORE AS

STAINLESS SOCKET WELDING FLANGES 300 LBS



ASTM A182, ASME B16.5

Raised face, smooth finish (125-250 RMS / 3.2-6.3 μm)

Pipe		Flange						Hub	Raised face	Drilling template		Weight	
Nom. size	O.D.	D	J	c	P	b	h	m	g	l	K	No. Of holes	Kg/pc
In.	mm	mm	mm	mm	mm	mm	mm	mm	mm	mm	mm		
1/2"	21.3		22.4	15.7	9.7	14.2	22.4	38.1	35.1	15.7	60.5	4	0.66
3/4"	26.7		27.7	20.8	11.2	15.7	25.4	47.8	42.9	19.1	69.9	4	1.15
1"	33.4		34.5	26.7	12.7	17.5	26.9	53.8	50.8	19.1	79.2	4	1.40
1 1/4"	42.2		43.2	35.1	14.2	19.1	26.9	63.5	63.5	19.1	88.9	4	1.75
1 1/2"	48.3		49.5	40.9	15.7	20.6	30.2	69.9	73.2	22.4	98.6	4	2.55
2"	60.3		62.0	52.6	17.5	22.4	33.3	84.1	91.9	19.1	120.7	8	2.93

Standard specification for ASTM flanges

Flanges, forged, ASTM A 182, F304/304L or F316/316L (dual marked and certified), ASME B16.5, annealed and fully machined, raised face, smooth finish (125-250 RMS / 3.2-6.3 μm) to MSS-SP6, hardness to NACE MR0175 latest edition. IC checked to ASTM A262 E and PMI tested

All ASTM/ASME flanges are certified according to EN 10204/3.1.