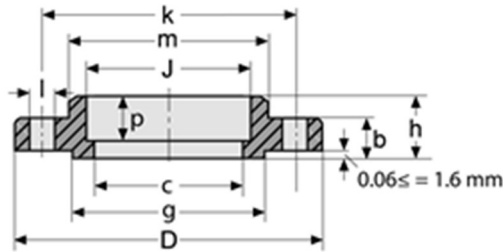


TALA OFFSHORE AS

STAINLESS SOCKET WELDING FLANGES 150 LBS



ASTM A182, ASME B16.5

Raised face, smooth finish (125-250 RMS / 3.2-6.3 μm)

Pipe	Flange				Hub				Raised face	Drilling template		Weight	
Nom. size	O.D.	D	J	c	P	b	h	m	g	l	K	No. Of holes	Kg/pc
In.	mm	mm	mm	mm	mm	mm	mm	mm	mm	mm	mm		
1/2"	21.3	88.9	22.4	15.7	9.7	11.2	15.7	30.2	35.1	15.7	60.5	4	0.42
3/4"	26.7	98.6	27.7	20.8	11.2	12.7	15.7	38.1	42.9	15.7	69.9	4	0.59
1"	33.4	108	34.5	26.7	12.7	14.2	17.5	49.3	50.8	15.7	79.2	4	0.81
1 1/4"	42.2	117.3	43.2	35.1	14.2	15.7	20.6	58.7	63.5	15.7	88.9	4	1.07
1 1/2"	48.3	127	49.5	40.9	15.7	17.5	22.4	65	73.2	15.7	98.6	4	1.36
2"	60.3	152.4	62.0	52.6	17.5	19.1	25.4	77.7	91.9	19.1	120.7	4	2.10

Standard specification for ASTM flanges

Flanges, forged, ASTM A 182, F304/304L or F316/316L (dual marked and certified), ASME B16.5, annealed and fully machined, raised face, smooth finish (125-250 RMS / 3.2-6.3 μm) to MSS-SP6, hardness to NACE MR0175 latest edition. IC checked to ASTM A262 E and PMI tested

All ASTM/ASME flanges are certified according to EN 10204/3.1.