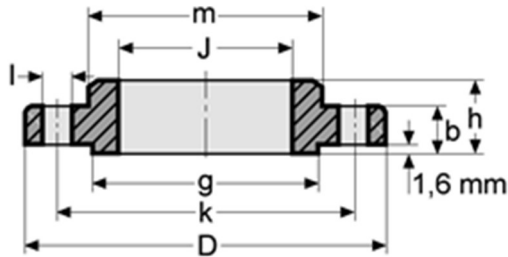


TALA OFFSHORE AS

STAINLESS SLIP-ON FLANGES 300 LBS



ASTM A182, ASME B16.5

Raised face, smooth finish (125-250 RMS / 3.2-6.3 μm)

Pipe Nom. size	Flange		Hub	Raised face	Drilling template		Weight Kg/pc				
	O.D. Tube	D			J	b		h	m	g	I
In.	mm	mm	mm	mm	mm	mm	mm	mm	mm		
1/2"	21.3	95.3	22.4	14.2	22.3	38.1	35.0	15.7	66.5	4	0.640
3/4"	26.7	117.3	27.7	15.7	25.4	47.7	42.9	19.0	82.5	4	1.120
1"	33.4	123.9	34.5	17.5	26.9	53.8	50.8	19.0	88.9	4	1.360
1 1/4"	42.2	133.3	43.2	19.0	27.0	63.5	63.5	19.0	98.4	4	1.800
1 1/2"	48.3	155.4	49.5	20.6	30.2	69.8	73.2	22.3	114.3	4	2.490
2"	60.3	165.1	62.0	22.3	33.2	84.0	91.9	19.0	127.0	8	2.870
2 1/2"	73.0	190.5	74.7	25.4	38.1	100.0	104.6	22.2	149.2	8	4.400
3"	88.9	209.5	90.7	28.4	42.9	117.3	127	22.3	168.1	8	5.850
4"	114.3	254.0	116.1	31.7	47.7	146.0	157.2	22.3	200.1	8	9.610
5"	141.3	279.4	142.8	35.1	50.8	177.8	185.7	22.3	235.0	8	12.30
6"	168.3	317.5	170.7	36.5	52.3	206.2	215.9	22.3	269.7	12	15.60
8"	219.1	381.0	221.5	41.1	61.9	260.3	269.7	25.4	330.2	12	24.20
10"	273.0	444.5	276.4	47.6	66.7	320.7	323.9	28.6	387.3	16	37.10
12"	520.7	520.7	327.2	50.8	73.0	374.6	381	31.7	450.8	18	50.00

Standard specification for ASTM flanges

Flanges, forged, ASTM A 182, F304/304L or F316/316L (dual marked and certified), ASME B16.5, annealed and fully machined, raised face, smooth finish (125-250 RMS / 3.2-6.3 μm) to MSS-SP6, hardness to NACE MR0175 latest edition. IC checked to ASTM A262 E and PMI tested

All ASTM/ASME flanges are certified according to EN 10204/3.1.