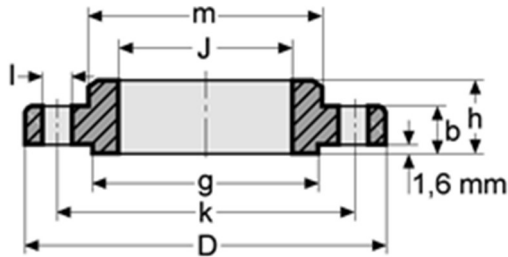


TALA OFFSHORE AS

STAINLESS SLIP-ON FLANGES 150 LBS



ASTM A182, ASME B16.5

Raised face, smooth finish (125-250 RMS / 3.2-6.3 μm)

Schedule 40S/80S

Pipe	Flange					Hub	Raised face	Drilling template		Weight	
Nom. size	O.D.	D	J	b	h	M	g	I	K	No. Of holes	Kg/pc
In.	mm	mm	mm	mm	mm	mm	mm	mm	mm		
1/2"	21.3	88.9	22.4	11.2	15.7	30.2	35.1	15.7	60.5	4	0.480
3/4"	26.7	98.6	27.7	12.7	15.7	38.1	42.9	15.7	69.9	4	0.710
1"	33.4	108	34.5	14.2	17.5	49.3	50.8	15.7	79.2	4	1.010
1 1/4"	42.2	117.3	43.2	15.7	20.6	58.7	63.5	15.7	88.9	4	1.330
1 1/2"	48.3	127	49.5	17.5	22.4	65	73.2	15.7	98.6	4	1.720
2"	60.3	152.4	62.0	19.1	25.4	77.7	91.9	19.1	120.7	4	2.580
2 1/2"	73	177.8	74.7	22.4	28.4	90.4	104.6	19.1	139.7	4	4.110
3"	88.9	190.5	90.7	23.9	30.2	108	127	19.1	152.4	4	4.920
4"	114.3	228.6	116.1	23.9	33.3	134.9	157.2	19.1	190.5	8	6.840
5"	141.3	254	142.8	23.9	36.6	163.5	185.7	22.4	215.9	8	9.200
6"	168.3	279.4	170.7	25.4	39.6	192	215.9	22.4	241.3	8	10.60
8"	219.1	342.9	221.5	28.4	44.5	246.1	269.7	22.4	298.5	8	17.60
10"	273	406.4	276.4	30.2	49.3	304.8	323.9	25.4	362	12	24.00
12"	323.8	482.6	327.2	31.8	55.6	365.3	381	25.4	431.8	12	36.50
14"	355.6	533.4	359.2	34.9	57.1	400	412.7	28.6	476.2	12	51.00
16"	406.4	596.9	410.5	36.5	63.5	457.2	469.9	28.6	539.7	16	60.00
18"	457.2	635.0	461.8	39.6	58.3	505.0	533.4	31.8	577.9	16	68.30
20"	508.0	698.5	513.1	42.9	73.2	558.8	584.2	31.8	635.0	20	84.50
24"	609.6	812.8	616.0	47.8	82.6	663.4	692.2	35.1	749.3	20	115.0

Standard specification for ASTM flanges

Flanges, forged, ASTM A 182, F304/304L or F316/316L (dual marked and certified), ASME B16.5, annealed and fully machined, raised face, smooth finish (125-250 RMS / 3.2-6.3 μm) to MSS-SP6, hardness to NACE MR0175 latest edition. IC checked to ASTM A262 E and PMI tested

All ASTM/ASME flanges are certified according to EN 10204/3.1.

Mailing address:
Tala Offshore AS
Kjelsbergalle 2, 4050 Sola

Visiting address:
Kongshaugvegen 21
4050 Sola

Phone: +47 979 84 841
e-mail: info@talaoffshore.no
www.talaoffshore.no
Org no. 917 689 652