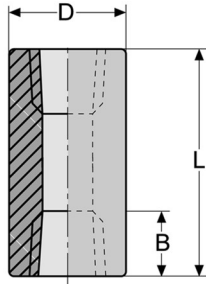


# TALA OFFSHORE AS

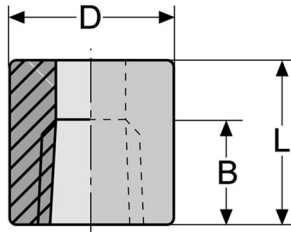
## END CAPS, NPT-THREADED



## ASTM A182 3000 lbs, ASME B16.11 / BS 3799

### Full couplings

Nominal pipe size	L	D	B	Weight
	mm	mm	mm	~kg/pc
1/4"	34.9	19.1	8.13	0.05
3/8"	38.1	22.2	9.14	0.06
1/2"	47.6	28.6	10.92	0.14
3/4"	50.8	34.9	12.70	0.20
1"	60.3	44.5	14.73	0.40
1 1/4"	66.7	57.2	17.02	0.70
1 1/2"	79.4	63.5	17.78	1.00
2"	85.7	76.2	19.05	1.90

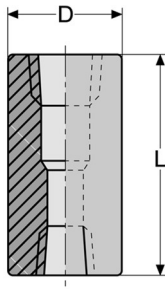


## ASTM A182 3000 lbs, ASME B16.11 / BS 3799

### Half couplings

Nominal pipe size	L	D	B	Weight
	mm	mm	mm	~kg/pc
1/4"	17.4	19.1	8.13	0.03
3/8"	19.1	22.2	9.14	0.05
1/2"	23.8	28.6	10.92	0.07
3/4"	25.4	34.9	12.70	0.10
1"	30.2	44.5	14.73	0.20
1 1/4"	33.3	57.2	17.02	0.32
1 1/2"	39.7	63.5	17.78	0.50
2"	42.9	76.2	19.05	0.95

# TALA OFFSHORE AS



## ASTM A182 3000 lbs, ASME B16.11 / BS 3799

### Reducing couplings

Nominal pipe size	L	D	Weight
	mm	mm	~kg/pc
1/2" x 1/4"	47.6	28.6	0.14
3/4" x 1/2"	50.8	34.9	0.20
1" x 1/2"	60.3	44.5	0.40
1" x 3/4"	60.3	44.5	0.40
1 1/4" x 1"	66.7	57.2	0.70
1 1/2" x 1"	79.4	63.5	1.00
1 1/2" x 1 1/4"	79.4	63.5	1.10
2" x 1 1/2"	85.7	76.2	1.90

Stainless forged, threaded fittings in F304/304L and F316/316L (dual marked). All ASME 3000lbs. threaded fittings are white pickled with hardness according to NACE MMR0175, IC according to ASTM A262E and PMI tested.

Threaded fittings are certified according to EN 10204/3.1.

### Threads

The threaded fittings are supplied with NPT threads (type C), standardized under ANSI/ASME B120-1. The internal and external threads are tapered.



ANSI/ASME B1.20.1